



GO ZERO Risk ... automate your factory from €2,000

RBTX®

RBTX
by igus®

- ▲
Tech up
- ▼
Cost down
- Proof
- Sustainability
- ◌
Digital

150 Programming robots of different brands with a single software
RobotCtrl - Control Any Robot

154 Ready for automation? Take off with ready-made robot solutions!
Complete solutions between €2,000 and €49,970

156 Robot training courses for all levels of experience
RBTX® Academy

159 Play before you pay: test robots interactively
RBTX® online tools

160 AI robot expert: your robot solution is waiting
RBTX® online tools

Quick consultation anywhere at any time



In person
Jens Klärner
+49 (0) 2203 9649-9449
jklaerner@igus.net



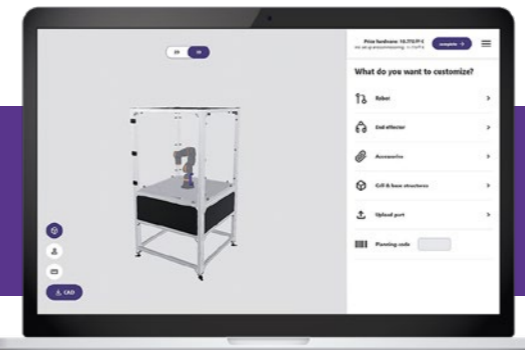
Chat
Online and WhatsApp
igus.eu/chat



On site
Sales representative
Roadshow/Trade show
igus.eu/lca-roadshow



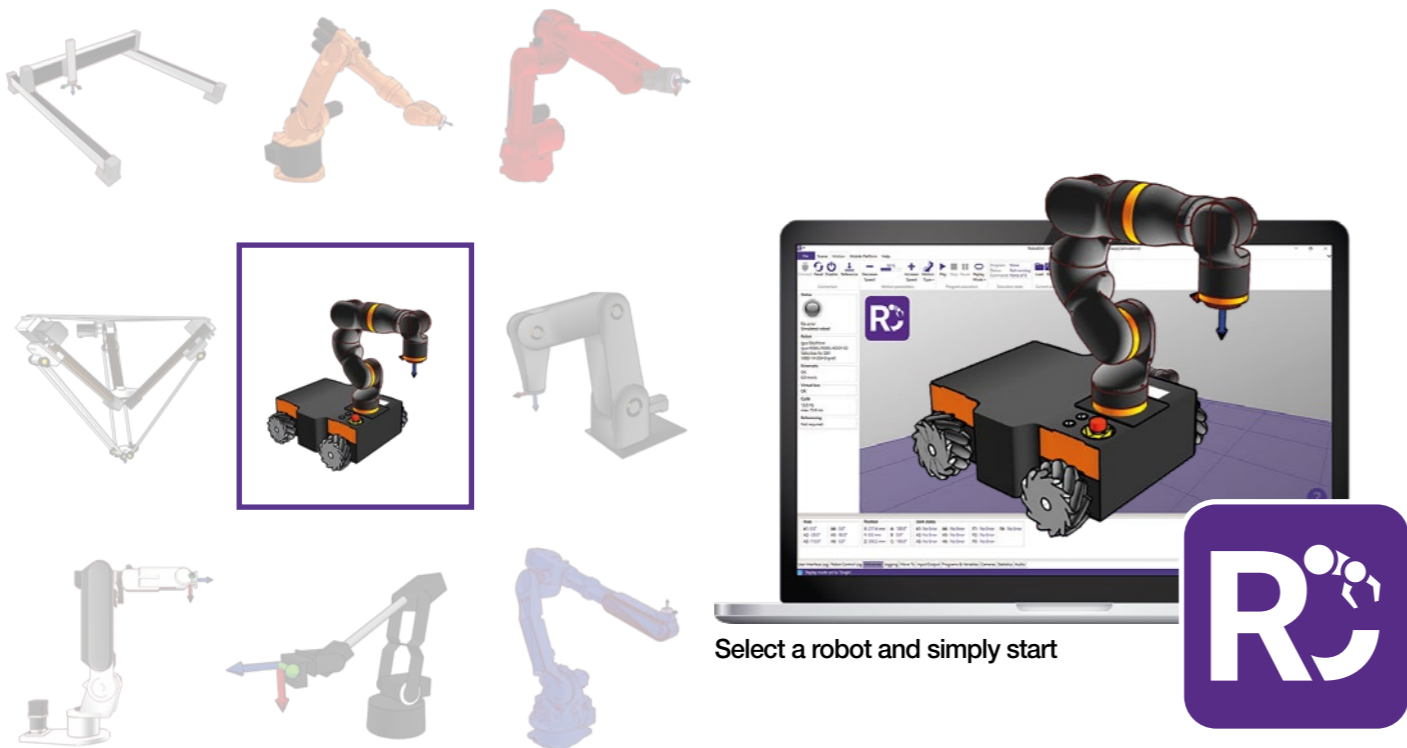
Automated handling of small parts
ReBeL® robot and Schmalz suction pads in use



Configure robot in five minutes
Plan a complete machine consisting of cell, robot, gripper and accessories to realise your individual application.
igus.eu/machine-planner

igus.eu/news-LCA

One control system for all robots



Select a robot and simply start

Update

Programming robots of different brands with a single software

RobotCtrl - Control Any Robot

With the RobotCtrl control software, robots available on RBTX® can be operated in a standardised manner, regardless of the manufacturer. The software also allows integration with accessories such as cameras, grippers or robot cells. The robot models from Lebai, Hitbot and Lynx Motion have now also been added. For you, this means only one control system for all robots.

- ▲ Programming robots from a wide range of manufacturers with just one software
- ▼ Reduce integration cost and effort
- Successfully tested with leading manufacturers
- Counteracts fragmented software landscape due to uniform design and centralised control system
- 🔄 Reduces programming effort as users only need to master a single software
rbtx.com/link/robotctrl



Step by step to automation with RBTX®

Imagine you are standing in your production hall and observing a monotonous, time-consuming work step. Perhaps the sorting of components, a simple assembly or quality control. You think to yourself: "A robot should be able to do that ...". But where do you start? And what does it cost? Don't worry - we will make your automation process simple and transparent! As the leading marketplace for robotics and automation, RBTX® brings together over **175 suppliers** and more than **850 robots** and components in one place. Whether grippers, sensors or complete robot systems - you will find everything you need for your automation system. Let's go through finding the perfect solution step by step:

Your first step: let us inspire you!

Browse around online on RBTX.com and find over **650 successfully implemented automation projects**. Perhaps another company with similar challenges has already found a solution? Click through use cases and watch videos of real robots - you'll soon realise: "Yes, that could work for us too!"

The free RBTXpert call - your direct line to expert knowledge

You've got an idea, but which components do you need exactly? Which robot, which gripper, which sensors? Instead of conducting endless research, simply book a free consultation appointment: rbtx.de/rbtxpert

The automation expert understands your requirements and makes specific suggestions. Within a few minutes, you will not only have a concrete idea of which solution might be suitable, but also an estimation of costs.

Gain security: test before you invest

Before you make a decision, you want to be sure: "Can a robot really perform this task the way I want it to?" No problem - with our "test before you invest" service,



Your RBTXpert in the Customer Testing Area when testing your application

you can have your application tested under real conditions in our Customer Testing Area and receive a detailed evaluation including video and cycle time.

RBTX® stands for

- 100% compatibility: tested solutions, ready for immediate use
- Test before you invest: free feasibility tests with video and fixed price offer
- Everything from one source: consultation, integration, service

Machine Planner - plan your own robot solution in five minutes

Would you like to configure your robot solution yourself? Then use the Machine Planner! With just a few clicks, you can put together your robot and accessories, including grippers, sensors and conveyor belts. The tool shows you the live price immediately, creates a CE-compliant plan and provides CAD data: configurator.rbtx.com/mp

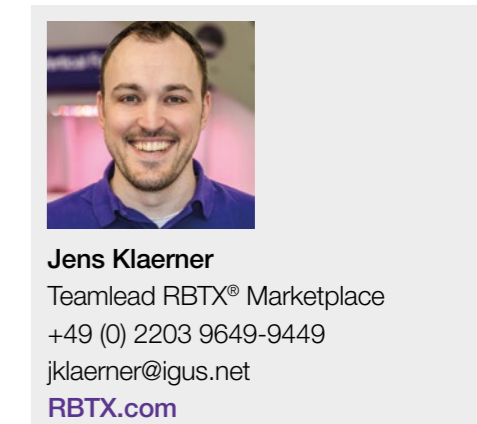
RBTX® Academy: robot training for all levels of experience (more on p. 156)

Would you like to learn the basics of robotics or upgrade your programming skills?

At the RBTX® Academy in Cologne, we offer hands-on training from the basics to expert programming. This will make your team fit for the future!

Always up to date: the future of automation

You have taken the first step towards automation - but this is just the beginning! You may soon discover other processes that can be optimised. Stay up to date with the RBTX® newsletter: new robotics developments, exciting projects and exclusive discounts straight to your inbox: rbtx.de/link/newsletter



Jens Klaerner
Teamlead RBTX® Marketplace
+49 (0) 2203 9649-9449
jklaerner@igus.net
[RBTX.com](https://rbtx.com)

Seventh axis for a reach of up to 6,000mm

For more flexibility



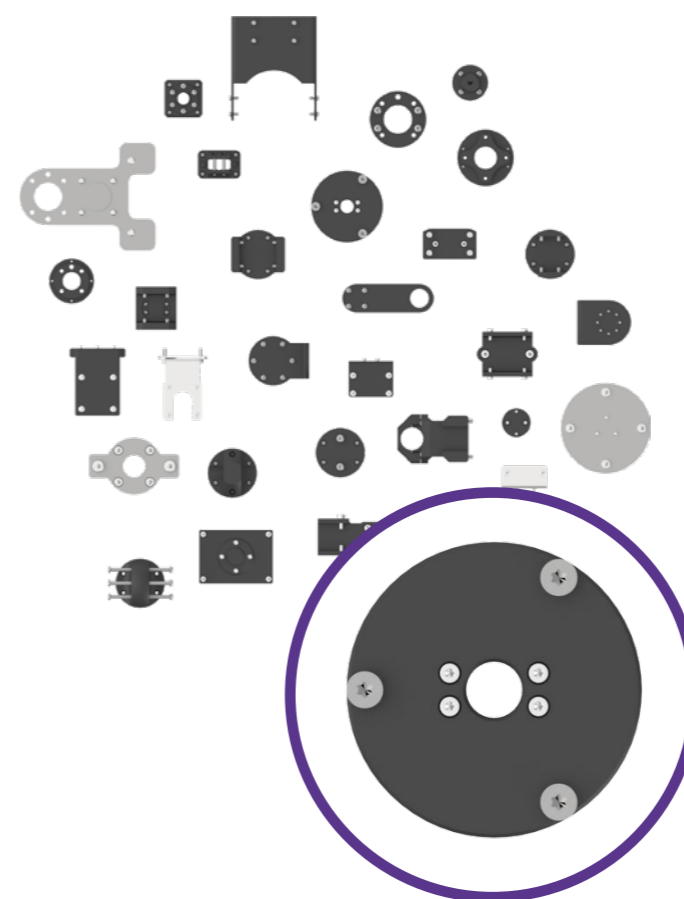
Update

Now compatible with UR 20, UR 30 and Fanuc CRX series

Seventh axis for a reach of up to 6,000mm

The seventh axis can be used flexibly and extends the operating radius of standard lightweight robots by up to 6,000mm, with further lengths available upon request. Thanks to its IP40 protection rating, it is ideal for precise and fast movements in industrial applications. This axis significantly increases the flexibility and range of your robot solutions and offers an accuracy of ± 0.1 mm.

- ▲ Flexible robot use instead of rigid kinematics with a speed of up to 0.6m/s
- ▼ Ready-to-connect delivery and installation possible
- Up to 6x larger workspace by using the 7th axis
- Lubrication-free toothed belt axis
- 🔗 Combine robots from a wide range of manufacturers with a seventh axis in the configurator with just a few clicks rbtx.de/link/7thaxis



Plus

Connected in the blink of an eye

Adapter plates for easy connection of grippers and robots

Compatibility guarantee: over 180 adapter plates available for different robots to simplify the integration of robots with grippers.

- ▲ Large selection of adapter plates for various robots and applications
- ▼ Cost-effective solutions from €69 per adapter plate
- High-quality and reliable, tested in customer projects worldwide
- Accelerates integration and reduces material costs
- 🔗 Simple ordering thanks to automatic selection of suitable adapter plates in the RBTX® marketplace



New

Robotics consultation: your questions, our answers

Live webinar with tips and tricks for your automation project

The regular online consultations provide you with an overview of our product range, expert tips and an opportunity to compare notes.

- ▲ Expert tips and sharing information about your automation projects
- ▼ Free engineering
- Experience robots live in action
- No dispatch of samples and no travelling necessary
- 🔗 Register here for the next robotics consultation (in German): rbtx.de/link/sprechstunde



Complete solutions between €2,000 and €49,970

Plug and Play



New

Ready for automation? Take off with ready-made robot solutions!

Complete solutions between €2,000 and €49,970

Why go through the hassle of sifting through individual suppliers and components when everything can come from one source? From dosing, drilling, screwing and palletising to quality-checking - a complete package that is ready for immediate use. Efficient, cost-saving and easy to implement.

- ▲ CE-compliant machine systems for immediate "plug and play" use
- ▼ No compatibility problems or downtimes
- Compatibility and security check by the RBTX® team
- Save resources and only buy the components you need
- 🔗 Complete solutions in the marketplace: rbtx.de/link/complete-solutions



Ready-made complete solutions for your requirements Automate your factory from €2,000

In a world where every second counts, efficiency is the key to success - and automation is the key to efficiency. State-of-the-art robot technology opens up new possibilities: production processes are not only faster, but also more precise, reliable and flexible.

However, the road to perfect automation can be rocky. Different suppliers, countless components, time-consuming compatibility checks - sounds exhausting, doesn't it? Don't worry, our complete solutions will get you to your destination without any detours. Whether palletising, gluing, welding, integration into injection-moulding machines or even laboratory applications, we combine all relevant components in well-thought-out, ready-to-use packages. No complicated integration, no nerve-wracking tests, just simple automation. And the best thing is: the product range is constantly growing. New solutions? Are already in the works!

Why make life difficult for yourself? Here are your advantages:

- **Time savings:** no more searching for components - everything is already integrated and ready to use.
- **Cost savings:** compatibility problems and downtime? Not with us. You save money in the long term.
- **Simple implementation:** you don't need to be a technical genius. Our solutions are user-friendly and we will advise you in advance free of charge via RBTXpert video call.
- **Reliability:** durable, powerful and always ready to drive your business forward.

Flying high with palletising solutions for €17,745.51

If your production is looking for a highlight, we will take you to the heights - quite literally! The palletising solutions are the turbo for your logistics. Stacking products, packing pallets, optimising processes - all with ease. Whether you want to move 10, 20 or 25kg, we have the right solution. Prefer linear or collaborative robots? It's up to you!

Bonding and welding - connections that last for €13,699.40

In the world of bonding and welding technology, every detail counts. The gluing solutions create even, reliable connections that not only hold, but also meet the highest quality standards. Ideal for minimising errors and standardising processes. And for welding? We go the extra mile. With precise control and innovative software, the robots master even complex arc or laser-welding applications.

Efficient automation of injection-moulding machines for €2,688.12

Small but powerful! The sprue picker puts things in order in small injection-moulding machines. 1.25 seconds - sorting couldn't be faster. And yes, we speak from experience: over 330 of our own injection-moulding machines at igus® use the sprue picker successfully every day.

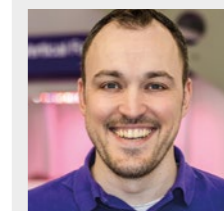
Laboratory automation in style: pipetting made easy for €1,974

Precision is a top priority in the laboratory and this is exactly what the pipetting solution offers. Drop by drop, it makes your processes efficient. And if you want to make an impression at a trade show, they are also unbeatable. Easy to use, simply impressive!

Missing something? No problem!

Put together your own customised robot solution: the Machine Planner makes it possible. Or simply contact us and we will develop a customised complete solution together with you.

rbtx.de/en-GB/components/complete-solutions



Jens Klaerner
Teamlead RBTX® Marketplace
+49 (0) 2203 9649-9449
jklaerner@igus.net
[RBTX.com](https://rbtx.com)

100% practice-orientated



Update

Robot training courses for all levels of experience

RBTX® Academy

After the training course, we want you to be able to program your robot independently, build your robot solution yourself and put it into operation.

- ▲ Practical exercises on industrial robots from different manufacturers
- ▼ Small learning groups to focus on individual progress
- Over 500 users have already benefited from training courses
- Sustainable integration of specialised knowledge into your company and, if desired, a special practical focus on your own application



Made in Cologne

Robot knowledge to go

Whether you want to learn the basics or advanced techniques of robot programming, the new training courses at the RBTX® Academy will give you the expertise you need to realise the full potential of your automation solutions. At the modern training centre in Cologne, you will learn in a relaxed atmosphere and in small, personal groups. You will experience industrial robots live in everyday production and visit our Customer Testing Area, where we check customer applications on a daily basis. Upon request, you can also take an exclusive look behind the scenes at the igus® factory.

You will put your newly acquired knowledge directly into practice in various hands-on exercises as we believe in practical experience. After successfully completing a training course, you will receive a certificate.

Basic training

You will learn the fundamentals of robot programming and apply your newly acquired knowledge directly to a real robot. At the end of the training, you can connect a gripper and create your own program. The training lasts one day.

Expert training

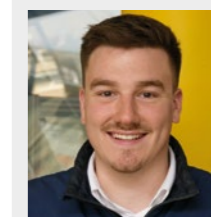
Extend your programming knowledge and learn advanced programming techniques such as loops, conditions, functions and variables. The training is ideal for anyone with basic knowledge. Upon request, the trainer team can also discuss interfaces and/or vision systems. The training is designed for two days.

Application training

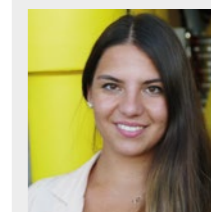
You will develop customised solutions for specific applications and integrate various robot components such as grippers and cameras. The training provides in-depth knowledge of robot programming. The duration of the training depends on the specific application.

We are also happy to offer training courses for people who do not have a professional background in automation technology. We would like to warmly welcome pupils, students and senior citizens to join us in exploring the exciting world of robotics. We also provide informative entertainment as part of a team event.

Please contact us if you have questions about contents, dates and offers. We look forward to sharing our robotics knowledge with you!
rbtx.eu/academy



Sebastian Stukenborg
 RBTX® Academy Trainer
 +49 (0) 2203 9649-8255
sstukenborg@igus.net
RBTX.com



Sena Esen
 RBTX® Academy Trainer
 +49 (0) 2203 9649-8255
sesen@igus.net
RBTX.com

Certificate RBTX Academy

This certificate is awarded to

First Name Last Name

For successful participation in the training course "igus® robot control | Basic training" organised by the RBTX Academy.

Cologne,

Management

Trainer

Course contents RBTX Academy

Congratulations, you have successfully completed the course.

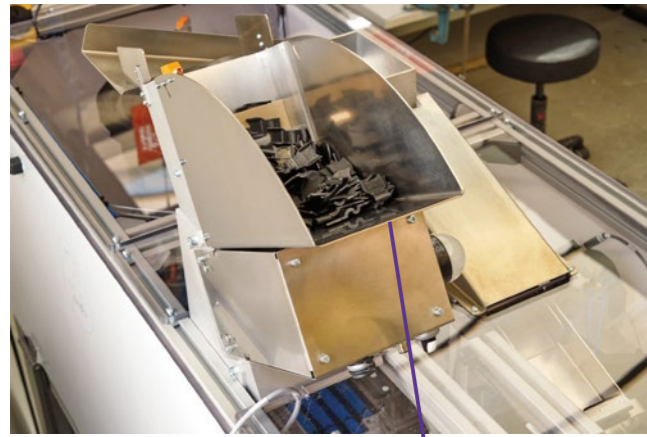
Your training course "igus® robot control basic training" contained the following topics:

- Fundamentals of robotics
- igus® robot control interface
- Creating programs in the igus® robot control
- Movement types (joint, linear, rotation)
- Logic commands (digital inputs & outputs, wait commands)
- Logic operations (loops & if, then, else)
- Practical exercises on robots

With this content, you will be able to create your own robot programs in the igus® Robot Control and successfully implement them in practical applications and processes.

Cologne, 19.02.2025





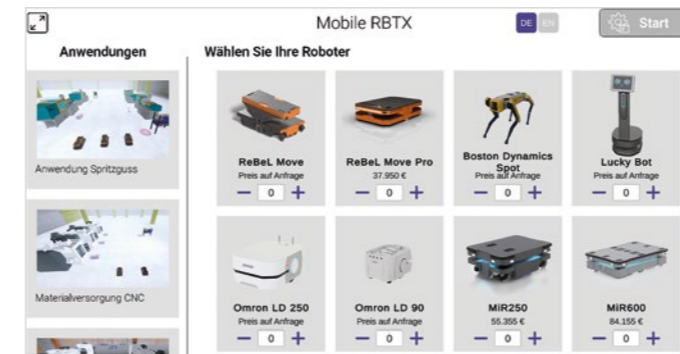
Study

Things are no longer topsy-turvy

Universal step conveyor for separating small parts

You can program the step conveyor's settings as required (speed, pause times, I/O signals). Different small parts can be separated and conveyed from a depot.

- ▲ Particularly simple separation solution
- ▼ Cost-effective complete solution
- The step conveyor is already being used successfully in many automation processes at igus®
- Modular design for separating individual parts by type
- 🔗 Simple control via igus® D1



New

Play before you pay: test robots interactively

RBTX® online tools

The new online tool Mobile RBTX® makes it possible to select robots and test them in a real production environment. Cruise around interactively and try before you buy!

- ▲ Choose from over 15 humanoid and mobile robots, robot dogs, cobots and much more.
- ▼ Real production environment including high-bay warehouse, injection-moulding machines and much more.
- Always with live price and compatibility guarantee
- Make informed decisions before buying expensive hardware
- 🔗 Try it out for yourself: rbtx.de/link/mobile



New

Five clicks to your recommended price offer

RBTX® online tools

Answer just five questions and receive customised automation proposals, a recommended price range and three similar applications for comparison.

- ▲ Customised automation solutions based on your requirements
- ▼ Transparent recommended price range after just five questions
- Display of three specific examples of realised applications
- Reduced resource consumption thanks to efficient automation solutions
- 🔗 Available soon on rbtx.com



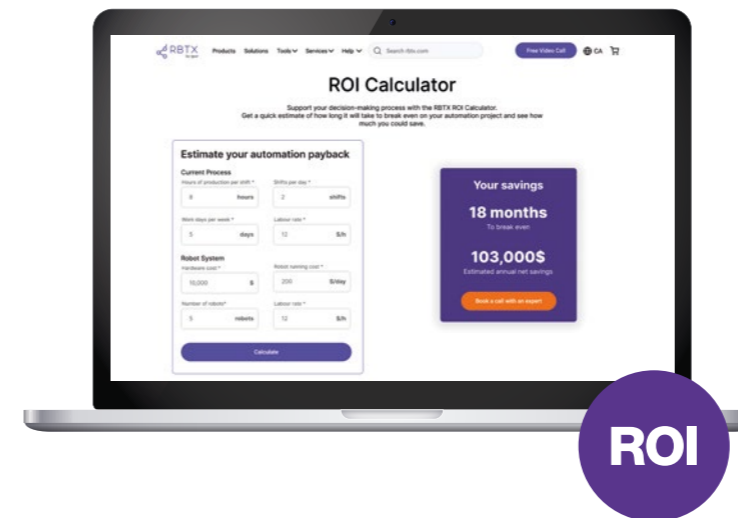
New

ROI calculator: calculating instead of puzzling

RBTX® online tools

With the ROI calculator for automation solutions, you can quickly and easily calculate how long it will take for your investment to pay off and what long-term savings you can expect.

- ▲ Helps you make informed decisions for automation projects
- ▼ Consideration of acquisition costs, operating costs, savings through increased efficiency and reduced error rates
- The calculator provides concrete facts and figures that demonstrate the benefits and savings of automation
- Helps you optimise energy consumption and use of resources
- 🔗 Available soon on rbtx.com



Chat. Click. Automated!

What can the ReBeL® cobot do?

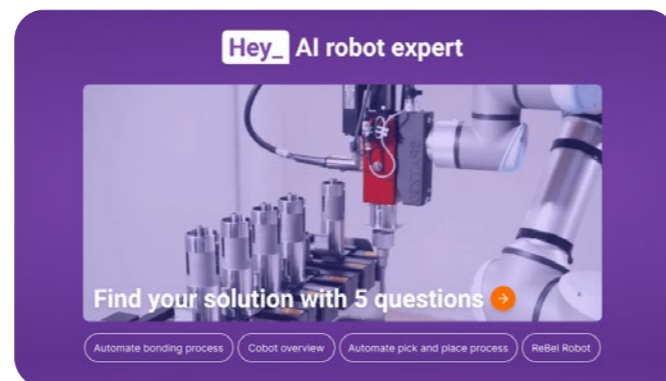
The ReBeL® cobot is a cost-effective six-axis robot with a reach of 664mm. It is versatile, safe for human interaction and easy to program with the igus® Robot Control software. Ideal for catering, automation, trade shows and more.

Can I use it for pick & place tasks for small parts above a conveyor belt?

Yes, it is perfect for pick & place tasks above a conveyor belt, such as transferring products in a fast-food restaurant. It has a maximum load capacity of 2kg and can be assembled on a seventh axis. Programming is easy with the igus® Robot Control software.

Perfect, thank you very much!

Enter message ...



New

AI robot expert: your robot solution is waiting

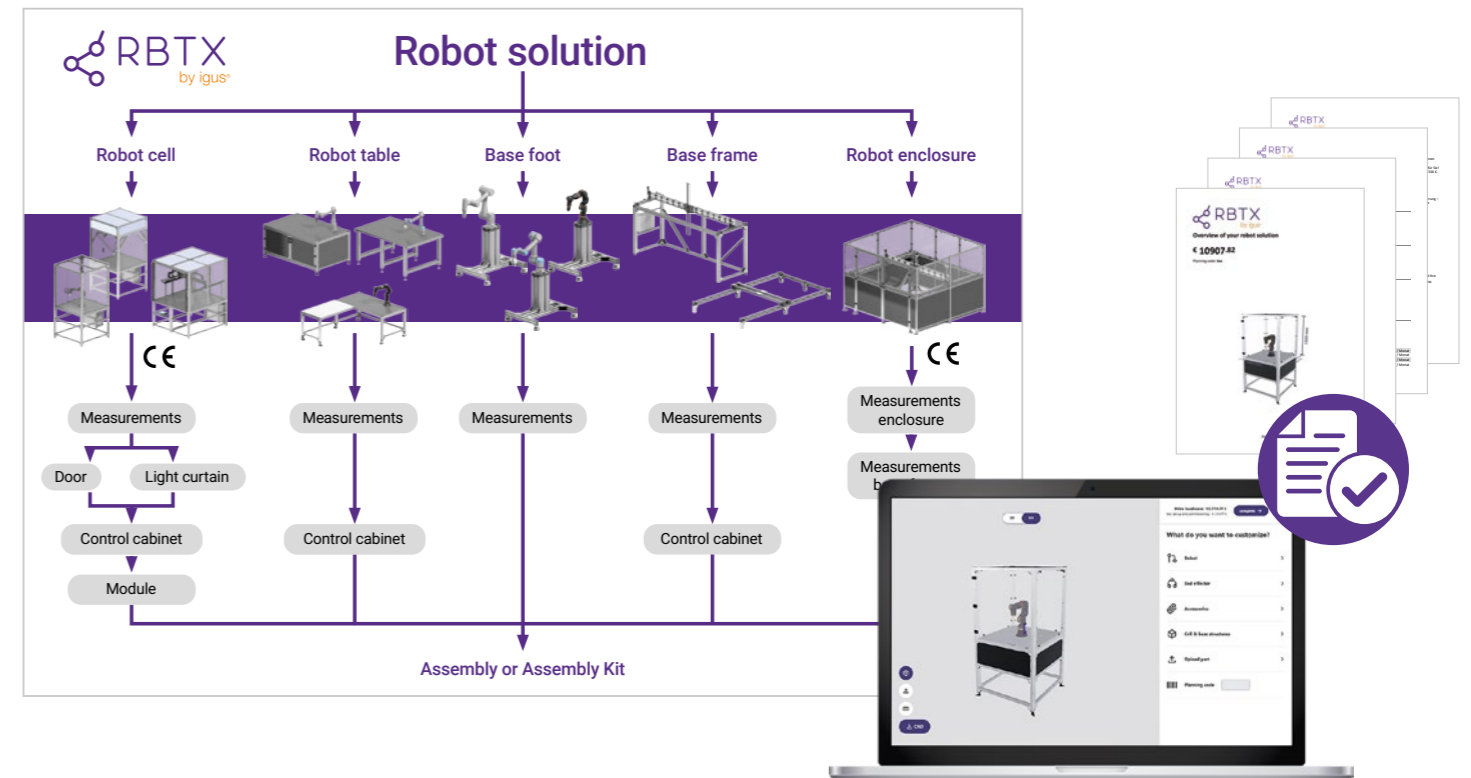
RBTX® online tools

The AI robot expert on RBTX.com helps you find cost-effective automation solutions quickly and easily. It uses empirical data from successful projects to suggest the ideal components and facilitate the search.

- ▲ AI chatbot finds the best parts for your application
- ▼ The ideal and affordable automation solution with just a few questions
- Draws on information and data from successful projects
- Minimises wrong purchases, conserves resources, allows for environmentally friendly automation
- 🗨 Start the chat via chat.rbtx.de



Robots planned in five minutes



New

Machine Planner - everything at a glance

RBTX® online tools

We are constantly adding new features to the Machine Planner to offer you even more options. Once you have configured your robot solution, you can now easily download your project folder. It contains all the important information in a clear format and makes it easier for you to realise your project.

- ▲ Plan your robot solution online with CE certification
- ▼ With a live price that is up to five times cheaper than classic robot solutions
- Already in use by over 5,000 igus® customers
- Systems expandable at any time
- 🗨 Configure your own robot solution here within five minutes: rbtx.com/link/mp





GO ZERO Risk ... automate your factory from €2,000

RBTX[®]



Robotix for less



Tech up



Cost down



Proof



Sustainability



Digital

102

Create more power for your configuration within five minutes
Machine planner - create the right robot solution online

104

igus[®] robot meets Siemens technology
Linear robot with Siemens S7 control system

104

Speed in XXL format
XXL 3-axis delta robot with up to 96 picks/min

106

Inform, optimise, profit
Practical tips and concrete solutions on the "Learn More" pages of RBTX[®]

107

Heavy lifting made easy
Palletising solutions from cobots and articulated robots to Cartesian robots

Quick consultation anywhere at any time



In person
Jens Klärner
+49-2203 9649-9449
jklaerner@igus.net



Chat
Online and WhatsApp
igus.eu/chat

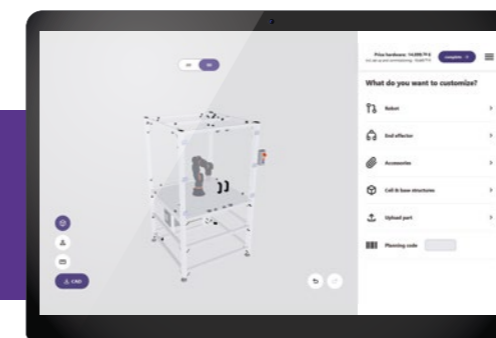


On site
Sales representative Roadshow/Trade show
igus.eu/lca-roadshow



Reliable quality control at GSK

Automated acceleration tester with articulated robot



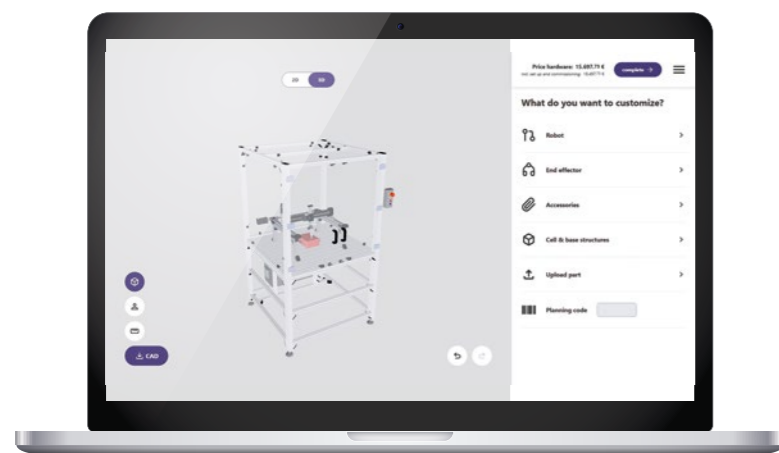
Configure robot in five minutes

Plan a complete machine consisting of cell, robot, gripper and accessories to realise your individual application.
igus.eu/machine-planner

igus.eu/news-LCA

Machine planner - create the right robot solution online

Robotix for less...



Update

Create more power for your configuration within five minutes

Machine planner - create the right robot solution online

The new updates not only make automation planning with the Machine Planner easier and faster, but also more efficient and precise. The Machine Planner now offers optimised configuration options and an improved marketplace connection. Your configurations are always provided with CAD data and CE, while robots and components are displayed in real time with live prices.

- ▲ 15 additional robot components available, new robot cell options such as double or single door design
- ▼ Complete package instead of hourly rates - transparent and cost-efficient, fixed price guarantee
- Already used by over 5,000 igus® customers
- Customised systems can be expanded at any time and always come with a compatibility guarantee
- 🔗 To the Machine Planner: configurator.rbt.com/mp



Machine planner - create the right robot solution online

Less ... risk, time and investment

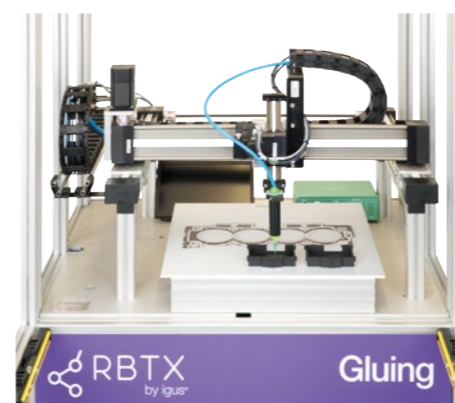
RBTX® makes automation accessible to everyone. With over 1,000 robots and components from more than 250 leading manufacturers worldwide, the platform offers companies everything they need to optimise their production processes - and all from a single source: consulting, integration and implementation. Whether dosing systems, grippers, safety cells or complete robot solutions, RBTX® simplifies the entry into automation.

Your application counts - not the robot

In modern production, recurring tasks such as gluing, joining, quality testing and measuring are increasingly being automated in order to remain competitive. However, customers are not asking for a specific robot - they are looking for turnkey solutions that fulfil their individual requirements reliably and economically. This is precisely where the innovative Machine Planner from RBTX® comes in.

The Machine Planner - your robot solution in just a few clicks

With the Machine Planner, you can design your complete automation solution without CAD knowledge. Whether linear, delta or articulated robots, cameras, grippers or safety cells - the tool allows you to configure all components in a playful way and bring them together visually. In this way, customised solutions are created in the shortest possible time, tailored to your requirements and perfectly integrated.



Example glue cell:

Components	Price
Gluing application Robot cell	€6,585.60
igus® room linear robot	€2,315.50
Safety control cabinet	€7,640.88
Safety light curtain	€5,676.63
Sick safety control system	€1,026.26
Vieweg dosing system	€1,612.86
Integration incl. CE	€3,359.10
Pneumatic maintenance unit	€1,609.92
Total costs	€29,826.75

... less risk

Automation solutions with the Machine Planner are 100% compatible and ready for immediate use. You can integrate robots from igus® or third-party robots without compromising on safety. The tool guarantees that your solution remains CE-compliant and fulfils all safety standards - for maximum reliability and minimum effort.

... less time

Thanks to the intuitive operation, you can design your automation with just a few clicks: safety cells, base frames and control systems can be easily customised and directly compared. RBTX® supplies you with components from over 250 leading manufacturers - all from a single source and always with clear advice and implementation. You save up to 100 hours of development time on average.

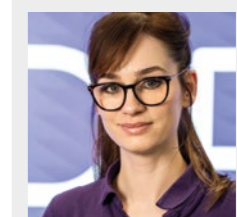
...less invest

The solutions in the Machine Planner impress with transparent fixed prices - often under €10,000, regardless of the complexity of your application. The tool gives you direct price quotations and saves time and resources that would otherwise be needed for technical clarifications or CAD drawings.

More performance thanks to new updates

The latest updates make the Machine Planner even more powerful: thanks to the improved configuration options, you can customise your solution to your requirements, bring cost down and further simplify operation. Optimised logic also enables precise pricing and smooth integration - even when using third-party robots. You select a pneumatic gripper and the Machine Planner configures a compressed air maintenance unit directly in the background without you having to think about it. You select the safety light curtain and the required SLC is configured in the background.

Test the Machine Planner yourself now to realise your automation ideas. Your customised solution is just a few clicks away: configurator.rbt.com/mp



Robin Julia Trute
RBTX®
+49-2203 9649-9449
rtrute@igus.net
RBTX.com



Update

igus® robot meets Siemens technology

Linear robot with Siemens S7 control system

The harmonised bundle of linear robot and Siemens S7 control system enables simple and fast integration into your production environment - developed in close cooperation between Siemens and igus®.

- ▲ Maximum compatibility thanks to fully customised control system bundle, modularly expandable
- ▼ Ready-to-use complete solution without additional development effort
- Proven by leading machine manufacturers with the highest safety and control conformity requirements
- Resource-saving integration and future-proof components
- 🔗 Easy to order via the RBTX® marketplace



Plus

Speed in XXL format

XXL 3-axis delta robot with up to 96 picks/min.

The low-cost delta robot LCA-DR1000-03 offers a reach of 1,000mm and can handle up to 96 picks per minute. Ideal for end-of-line tasks such as sorting, packaging or assembly in the food industry and manufacturing. It can be extended by a rotary axis.

- ▲ Fast picking and precise turning of products thanks to the optional 4th axis
- ▼ With a high speed of up to 96 picks per minute, production times can be reduced and more products manufactured in less time
- Tested in the Low Cost Automation test lab
- One robot for several process steps saves resources



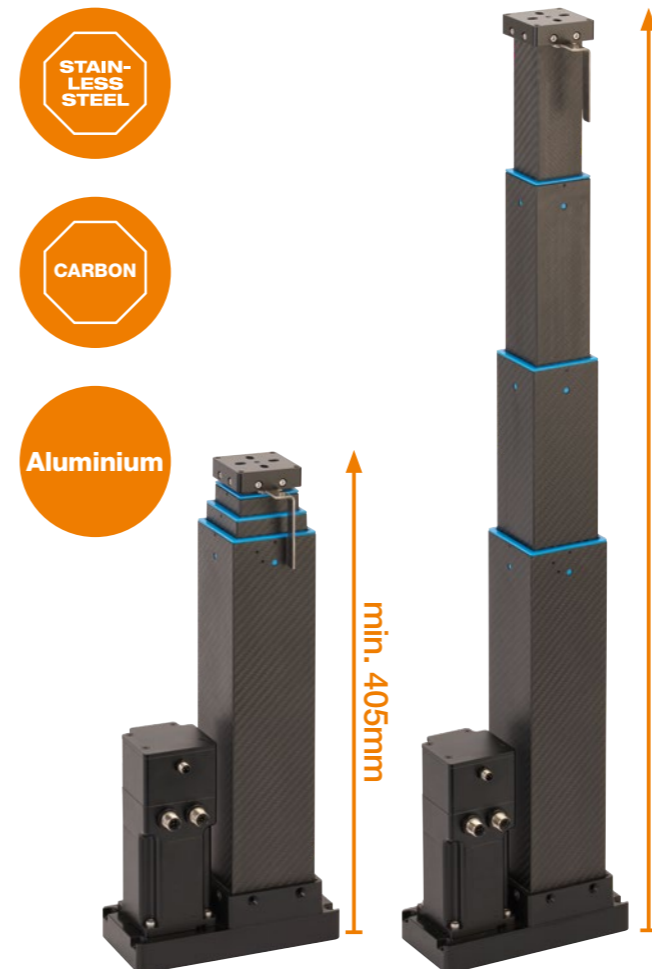
New

Intelligent automation on four legs

Four-legged robot with cobot

The SID-1Lite3 combines manoeuvrability, precision and versatility at an affordable price. With its robust design, it is ideal for a wide range of automation projects and research. It can also be extended with the ReBeL® cobot.

- ▲ Thanks to its 12 degrees of freedom, the robot dog enables movement on difficult terrain
- ▼ Affordable and flexible solution for a wide range of automation tasks
- Test the automation capability of your application with our "Test-before-Invest" service
- Durable materials and modular design thanks to the use of plastics
- 🔗 Test the robot dog online in a real production environment: rbtx.de/link/mobile



New

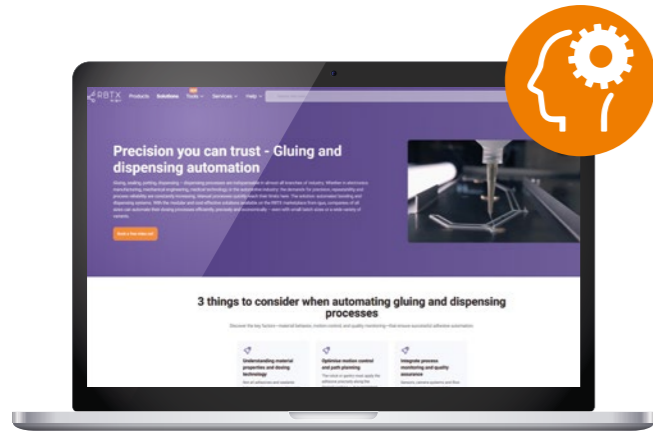
Small installation space, large stroke

Customised telescopic lifting units for your automation solution

Based on already implemented telescopic lift solutions, we realise your project individually and cost-efficiently. We develop your individual solution from carbon plastic, stainless steel plastic or aluminium plastic.

- ▲ Sliding surfaces made of iglidur® plastics enable a wide selection of material combinations
- ▼ Compact design saves space and resources
- Over 1,000 systems successfully in use
- Lubrication-free, durable and low-maintenance, outdoor use possible
- 🔗 Find the ideal solution for your application in a remote appointment with RBTXpert: rbtx.eu/rbtxpert





New

Inform, optimise, profit

Practical tips and concrete solutions on the "Learn More" pages of RBTX®

Our "Learn More" pages are your introduction to the world of automation. Each page is dedicated to a specific category, such as gluing, pick-and-place, quality control and many more.

- ▲ Learn more about automation: tips, benefits and success factors
- ▼ By informing us in advance, you save subsequent costs and unnecessary rework
- Access to over 600+ specific application templates on RBTX®
- Efficient decision-making reduces waste of resources
- 🌐 Available in over 45 countries - benefit from digital expertise and global exchange



Update

Test robots playfully

RBTX® Online tools

With the new games, we are expanding the interactive possibilities of the Mobile RBTX® tool! Test our mobile robots in a race now or experience our humanoid robot iggyRob picking and placing boxes in real production speed and environment.

- ▲ On Mobile RBTX® you can test more than 15 humanoid robots, mobile robots, robot dogs and cobots
- ▼ Move mobile robots interactively and test workflows before you buy
- Test mobile robots in real time under real production conditions - from high-bay warehouses to injection moulding machines and production plants
- Informed decisions thanks to live price and compatibility guarantee
- 🌐 Try it out for yourself: rbtx.de/link/mobile



Palletising solutions from cobots and articulated robots to Cartesian robots

Flying high



New

Heavy lifting made easy

Palletising solutions from cobots and articulated robots to Cartesian robots

We offer palletising applications from various manufacturers such as Fairino, Dobot, igus® and Fanuc. Our solutions enable precise palletising with a high load capacity, smart control system and flexible configuration - for greater productivity and less manual effort. A telescopic robot station is available as an option.

- ▲ Powerful performance with high load capacity and reach for maximum flexibility
- ▼ Cost-efficient automation thanks to affordable robot integration minimises downtimes
- Test the automation capability of your application with our "Test-before-Invest" service
- Lubrication-free, maintenance-free components
- 🌐 Find the ideal palletising solution remotely with RBTXpert: rbtx.eu/rbtxpert

